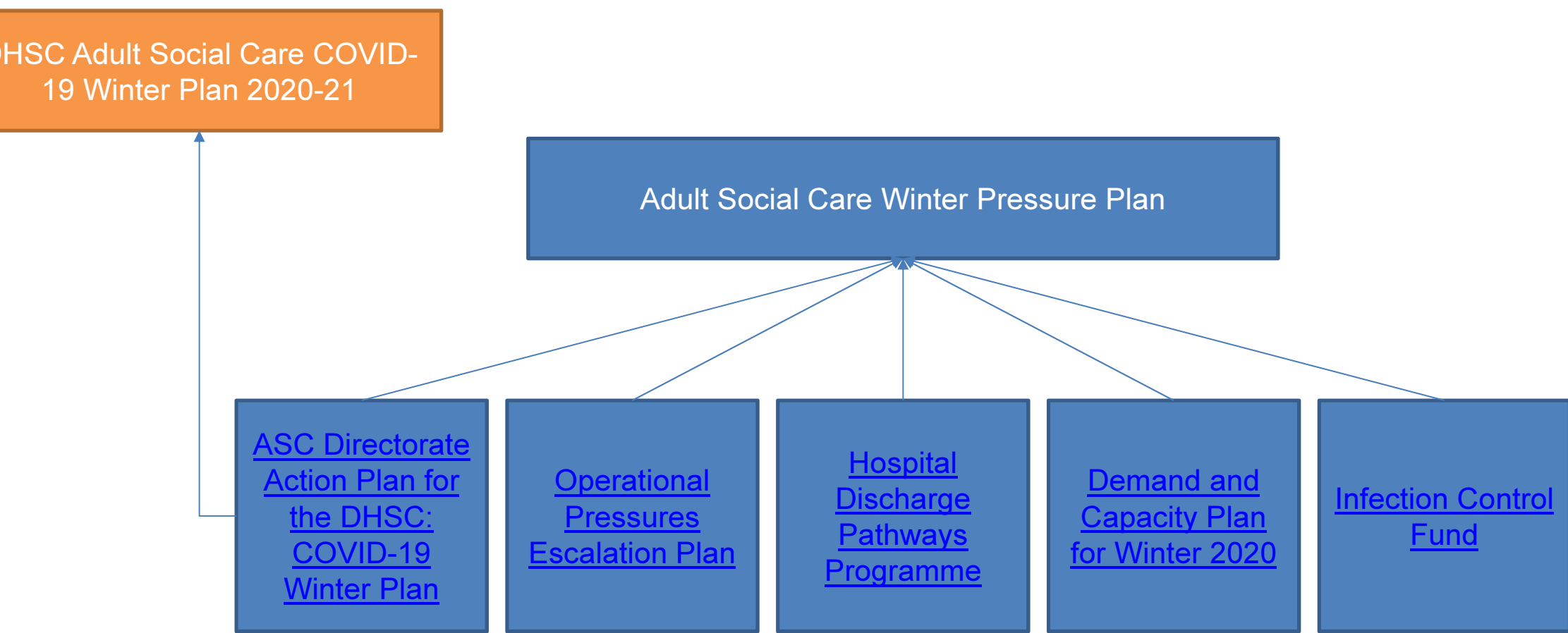


Adult Social Care and Health

Winter Pressure Plan 2020-21

Winter Plan Components



ASC Directorate Action Plan for the DHSC

Preventing and controlling the spread of infection in care settings

- Managing staff movement
- Guidance for providers on redeploying staff via the Care Home Hub Cell
- 'Provider Newsletter' containing guidance from DHSC and PHE
- Weekly SitRep including Care Home Tracker data
- PPE shortages identified and escalated
- Skills for Care and Design and Learning Centre delivering learning reviews after outbreaks

Collaborating across health and care services

- Senior Commissioners, Strategic Commissioning Analytics and ASC Performance establishing requirements for Winter 2020-21
- Joint commissioning of support packages for NHS discharges
- Continuing Health Care assessments and Multi-Disciplinary Team panels being delivered
- Recruitment for additional 12 social workers to manage assessment backlog

Technology and digital support

- Kent and Medway Winter Operating Model in place – oversight of whole-system, multi-agency surge management and escalation plans
- Care homes aligned to a Primary Care Network
- Ensures the delivery of Enhanced Health in Care Homes requirements
- Clinical Commissioning Groups will support care providers to collaboration, remote consultations and a risk-based approach to elective care admissions

Supporting people who receive social care, the workforce and carers

- Continuation of respite support
- Case by case support where day centres are closed
- Voluntary Care Sector is supported by ASC to deliver COVID-secure services
- Design and Learning Centre working with Skills for Care to promote induction training to providers

Supporting the system

- Market Position statements updated to support market shaping
- KCC collaborating with partners and people with care and support needs to facilitate the market
- Strategic Commissioning engaging with Care Home Hubs, ADASS and the South East Ageing Well network
- Strategic Commissioning championing the Capacity Tracker and Care Quality Commission community care survey to obtain data

Operational Pressures Escalation Plan (OPEP)

Objectives of the OPEP

Provide information about national operating frameworks and service requirements

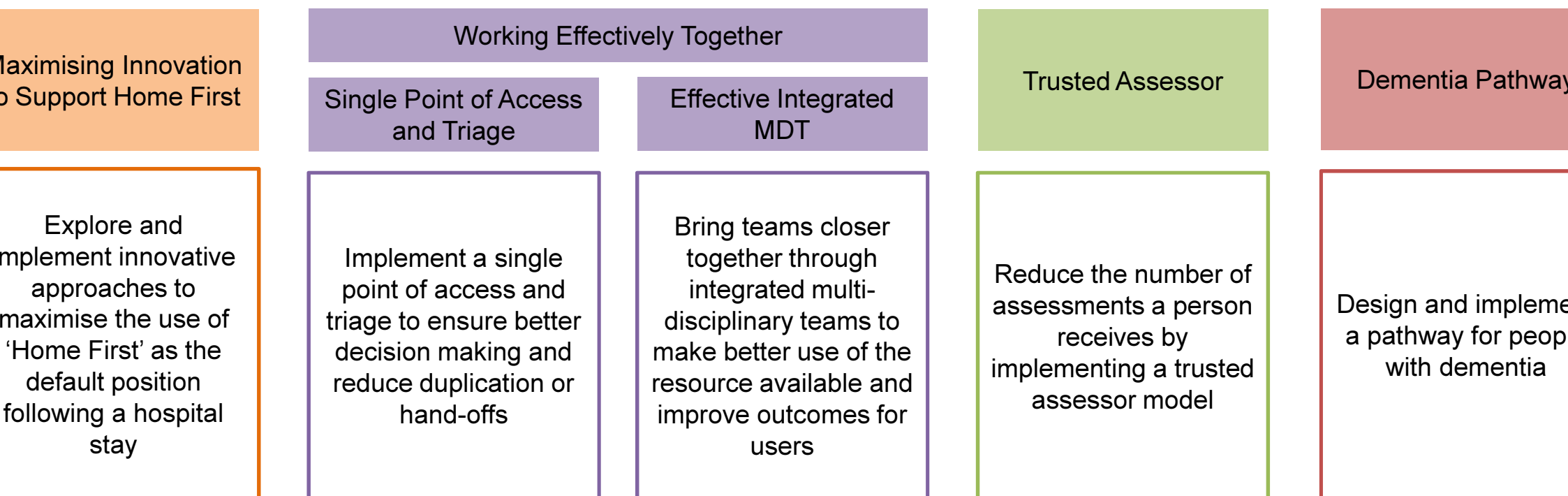
Identify roles and responsibilities for services, teams and individuals

Describe monitoring and reporting arrangements, provide early warning of surge pressures

Outline arrangements for responding to a surge in demand

Hospital Discharge Pathways

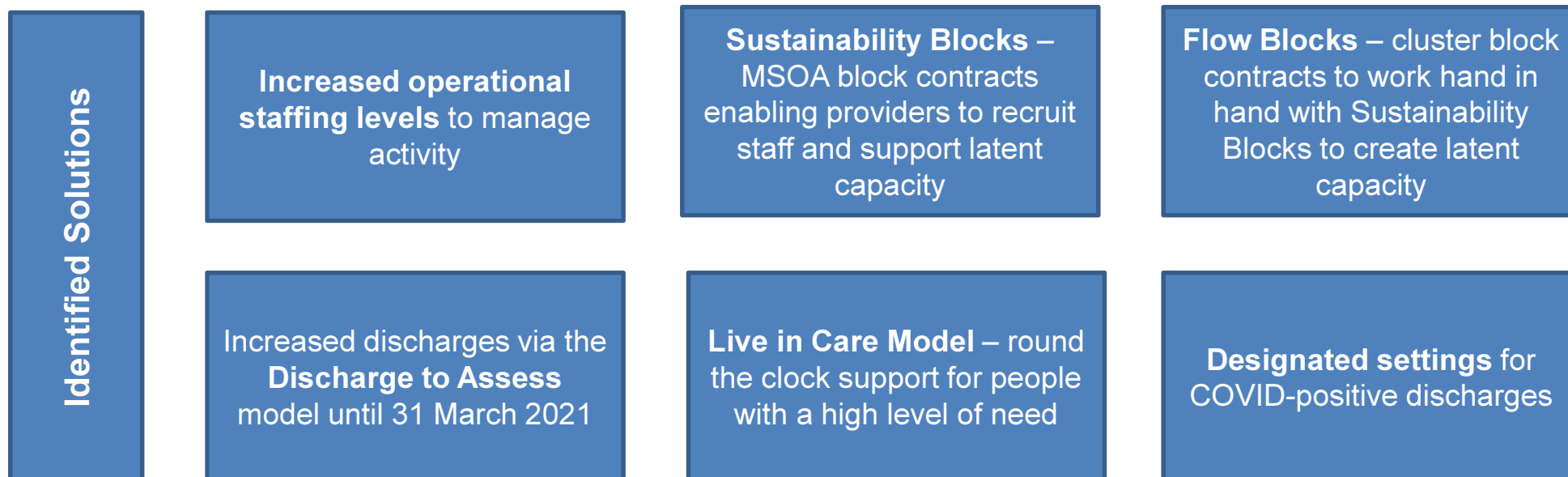
Directors from Kent County Council, Kent Community Health Foundation Trust and Kent and Medway CCG have agreed to lead on the hospital discharge pathway work for Winter 2020-21. The Leads have agreed a number of deliverables to be implemented in time for Winter 2020-21 and their organisations will work collaboratively to deliver these priorities. Underpinning these deliverables, each organisation will contribute resource to provide operational expertise, project management and analytics.



Demand and Capacity Plan for Winter 2020



Strategic Analytics have identified an anticipated **increased demand** for social care arising from activity in the acute sector during the winter period. The average rate of admissions to acute hospitals was below capacity for the early part of 2020, averaging approximately 70% (or 30% below “usual”). This is now increasing and is predicted to reach a **peak of extra demand by up to 20%** above “usual” in the lead **up to and after Christmas**.



Infection Control Fund

On 15 May 2020, the government published details of a £600 million adult social care infection control fund to tackle the spread of COVID-19. Local authorities have been responsible for the allocation of these funds.

First round – May 2020	Kent allocated £18 million
	75% of funds provided directly to care homes Funds provided on a 'per bed' basis and providers were required to deliver reporting of their spend on supporting infection control measures
	25% allocated at KCC's discretion KCC worked with Kent Integrated Care Alliance (KICA) and National Care Association (NCA) to distribute to community providers
Second round – extended to 31 March 2021	Kent allocated £16.6 million
	80% of funds provided directly to care homes Funds provided on a 'per bed' basis to care home providers Funds provided to community care providers on a 'per user' basis
	20% allocated at KCC's discretion